



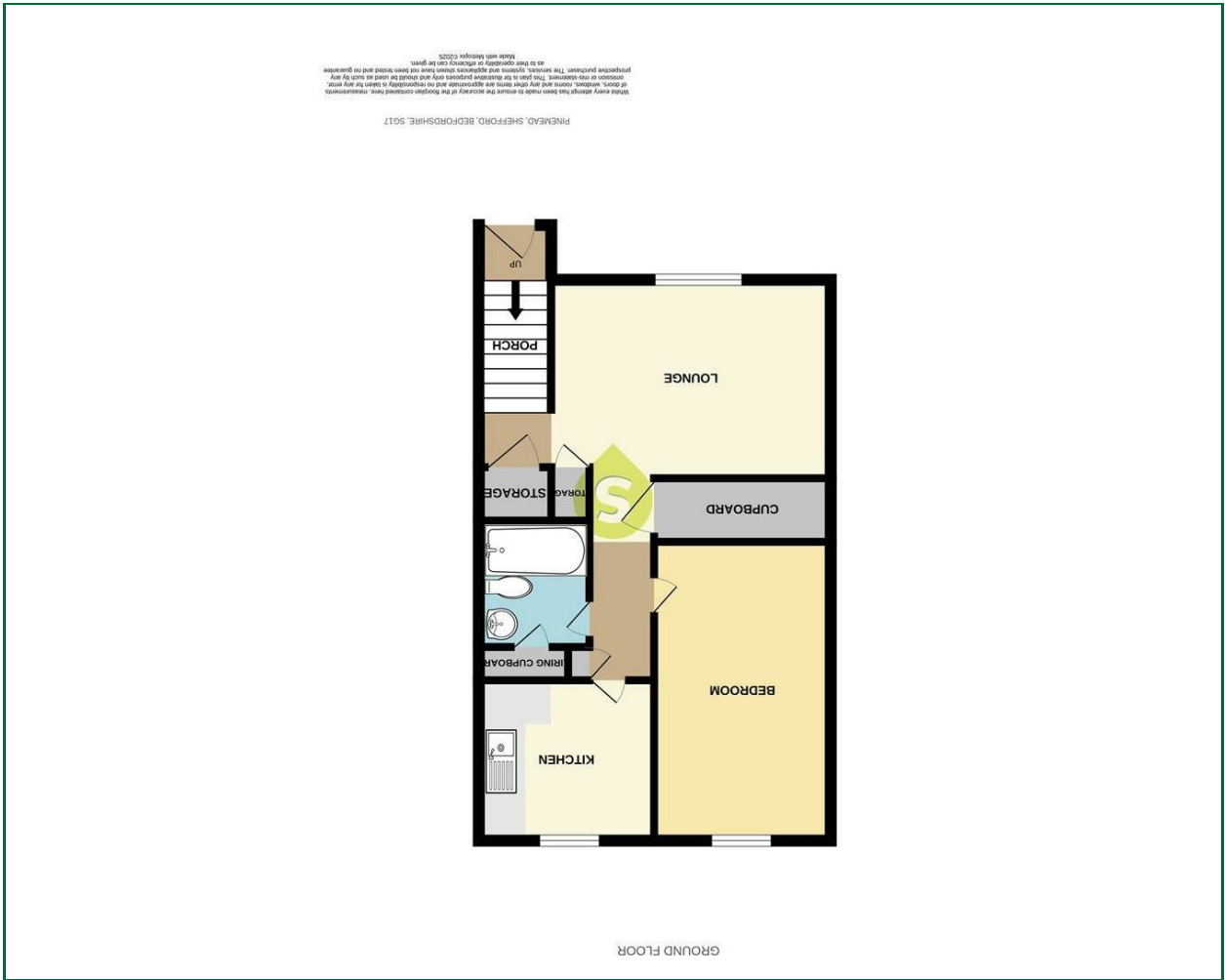
22 High Street, Shefford, Bedfordshire, SG17 5DG
Tel: 01462 814087 Email: enquiries@sheridans-estates.com <https://www.sheridans-estates.com>

These particulars, whilst believed to be accurate are set out as a general outline only for guidance and do not constitute any part of an offer or contract. Intending purchasers should not rely on them as statements of representation of fact, but must satisfy themselves by inspection or otherwise as to their accuracy. No person in this firm's employment has the authority to make or give any representation or warranty in respect of the property.

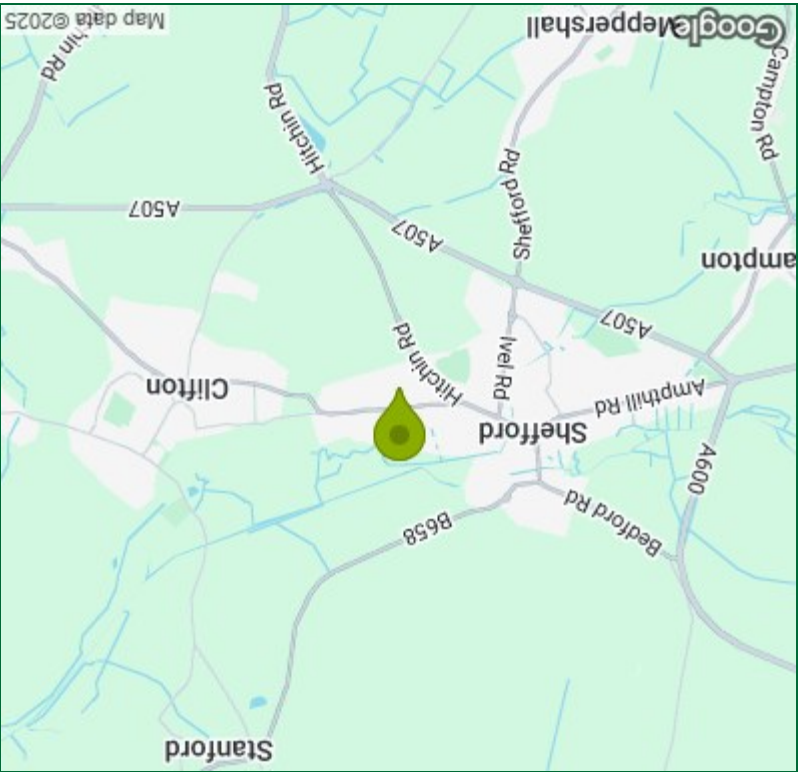
If you wish to arrange a viewing appointment for this property or require further information.

Please contact our Shefford Office on 01462 814087

Viewing

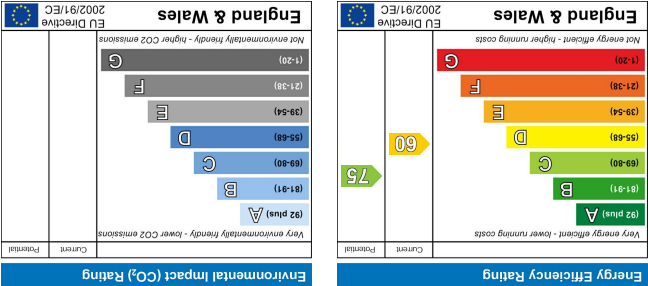


Floor Plan

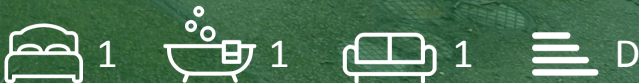


Area Map

Energy Efficiency Graph



Pinemead,
Shefford | Bedfordshire
£110,000



Entrance Hall
Entrance door, stairs leading to first floor, small cupboard.

Lounge
17'8" x 9'9"
Window to front, radiator, two, large fitted cupboard.

Hallway
Large storage cupboard, small storage cupboard.

Bedroom One
14'8" x 8'5"
Window to rear, radiator, access to loft space.

Kitchen
8'7" x 7'10"
Fitted with a range of base and eye level units with roll top work surfaces, stainless steel sink unit, tiled splash back, electric cooker point, plumbing for washing machine, floor standing gas boiler, window to rear, radiator.

Bathroom
Suite comprising of panel enclosed bath with mixer tap and shower attachment, low level w.c, wash hand basin, part tiled walls, radiator, airing cupboard housing hot water tank.

Outside
Path to front door, outside brick build cupboard.

Agents Notes
Leasehold.
Lease term 125 years from 1993.
Ground Rent £TBC.
Service Charge £TBC.
Council tax band A.

